

# Colour Settings - Fogra 39 - Imago instructions

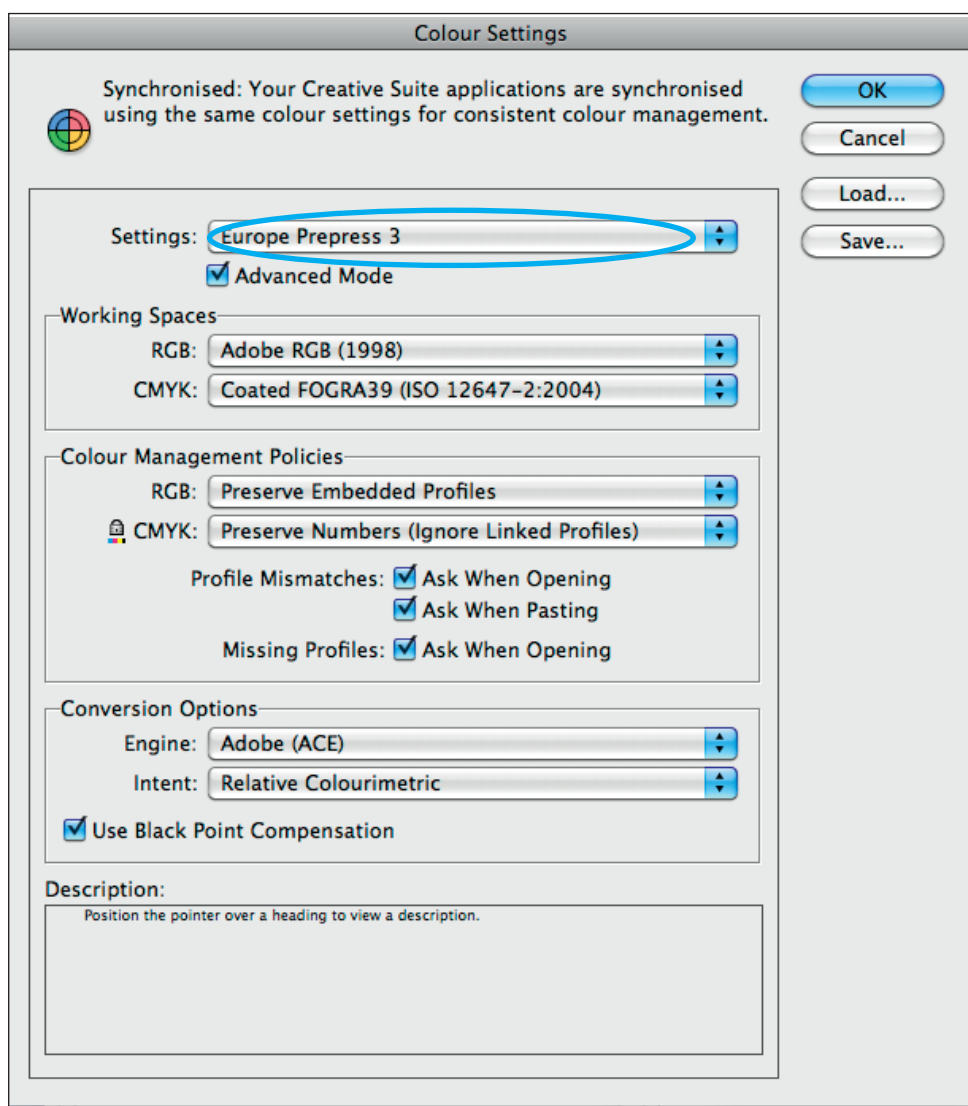
Shown in CS6 on Mac OS X 10.6

It is important to check that your Colour Settings are correctly set up in InDesign and Photoshop for creating work for printing, otherwise further colour changes may occur in the background. Colour profiles are used when converting from RGB to CMYK, when proofing digitally, as your Working Spaces in Creative Suite and when creating PDFs. Once they are correctly set up and your Colour Settings have been appropriately customised it is all straightforward.

**Fogra 39** profiles are appropriate for printing on coated or glossy papers

**Fogra 47** profiles are appropriate for printing on uncoated white paper

There are a number of different Fogra 39 profiles that can be used. Some are better than others or more suited to certain types of images. The following screen shots are all shown with the standard Adobe profiles that come with the software, or can be downloaded from Adobe's website. At the end we show you where you can download different profiles from and where you should place them.

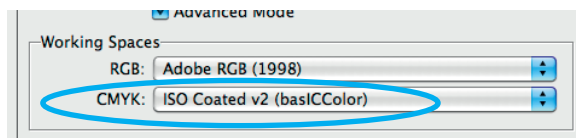
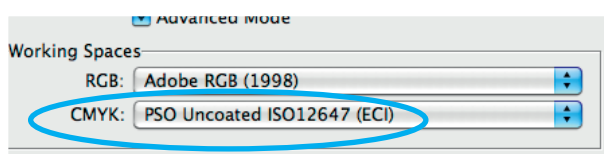


## 1. InDesign CS6 - Colour Settings

- Edit > Colour Settings
- At Settings scroll until you find the **Europe PrePress 3** settings.
- Once you've selected this the rest should automatically change to those shown here.
- Leave all other settings unchanged, exactly as shown here. Preserve Numbers (Ignore Linked Profiles) is a particularly important setting to have correct so that tints do not change.
- This is the Fogra 39 setting which is appropriate for coated paper.

If you wanted to use a different Fogra 39 profile, you would scroll on Working Spaces CMYK until you found the actual profile you wanted to use and then create a custom colour setting for that.

See below for example



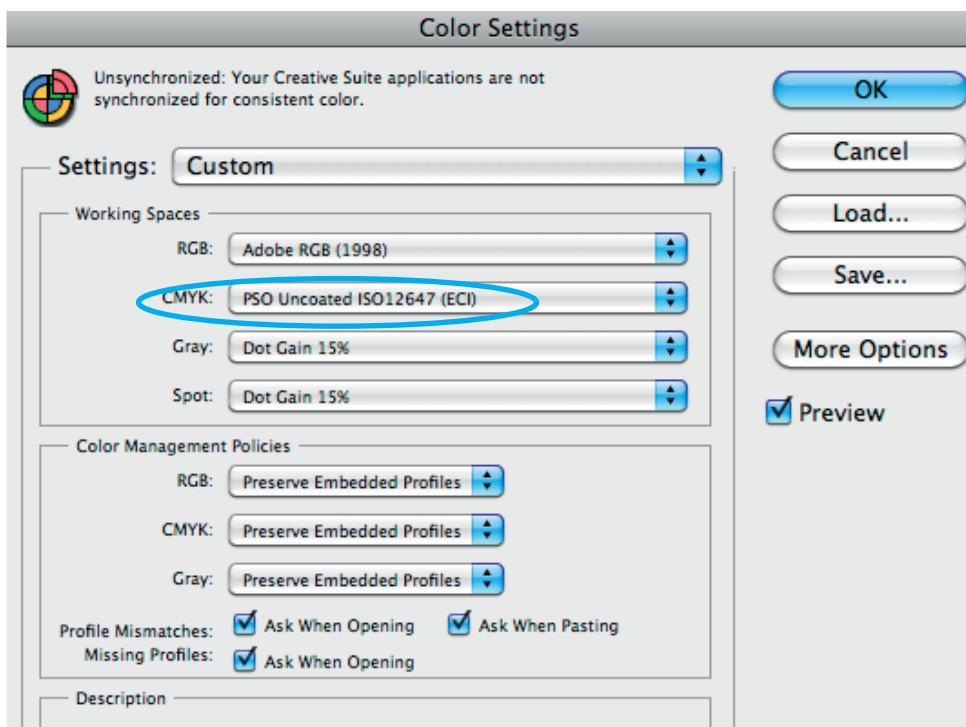
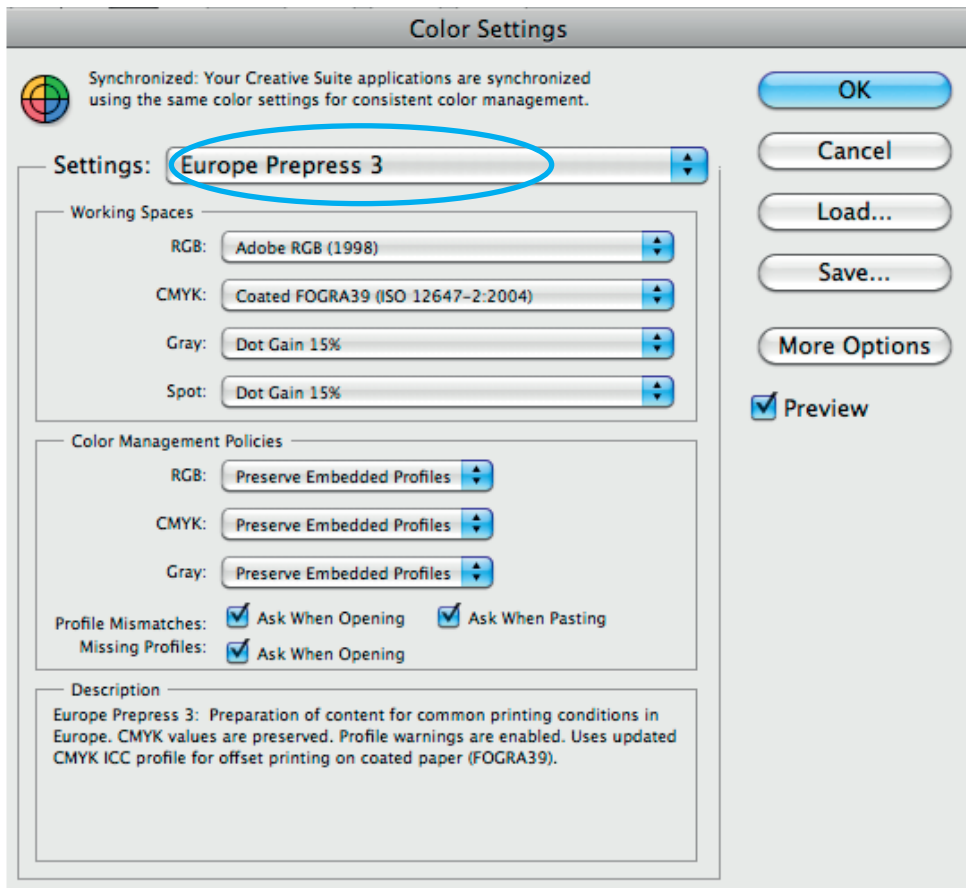
Showing different CMYK profiles you might use. First sample shows where an uncoated profile (Fogra 47) has been picked. The second sample shows a different Fogra 39 profile has been chosen.

## 2. Photoshop - Colour Settings

- Edit > Colour Settings

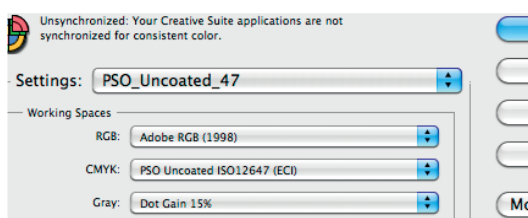
- Scroll under Settings until you find **Europe Prepress 3**.
- This is the correct setting to use when creating material for printing on coated paper whether printing in Europe or the Far East.

If you want to use a different Fogra 39 profile or the Fogra 47 profile (for printing on uncoated paper) you would scroll on CMYK in Working Spaces until you found the appropriate setting. Keep all other settings as shown here. See samples below.



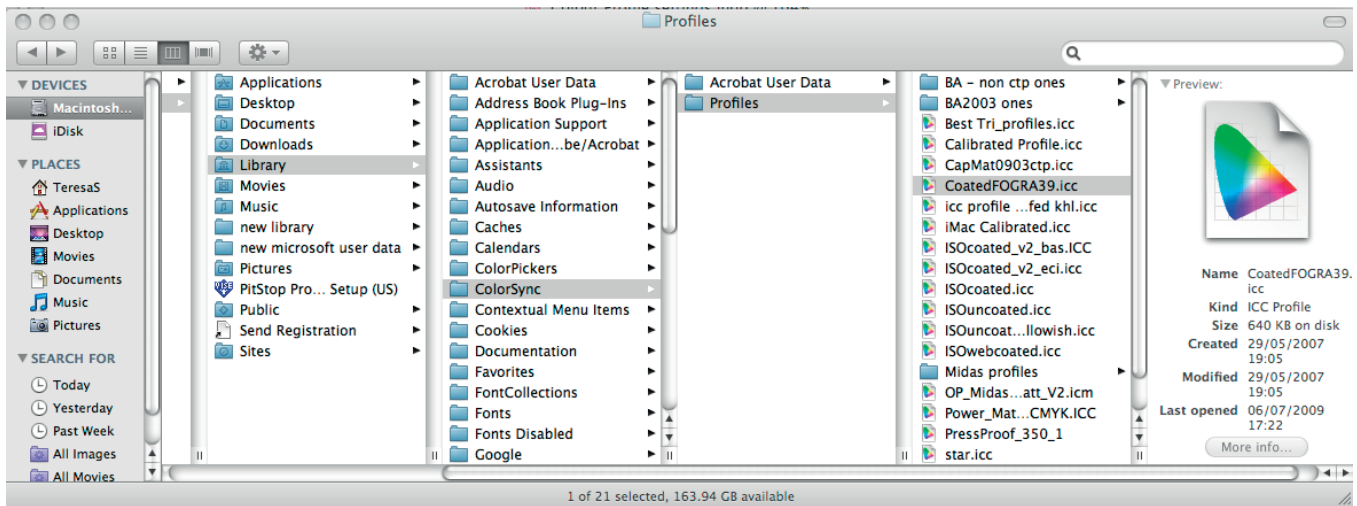
*To change to the profile to the uncoated Fogra 47 one.*

- In Working Spaces, at CMYK scroll until you find the appropriate profile. Here we have chosen the uncoated Fogra 47 profile, called PSO Uncoated ISO 12647 (ECI).
- Keep all other settings the same
- Name the newly created Colour Setting.
- If you don't find the profile you need to use, see next page for where to download a range of appropriate colour print profiles and where to place them.
- To work consistently your colour settings should be synchronized across your Creative Suite applications. Easy to do in Bridge.



Showing renamed settings.

## Colour settings for Creating Suite - contd



### Using Different Profiles

Place new profiles that you wish to use into **Library > ColorSync > Profiles**.

Two of the main reputable sites for different profiles that tie in with the ISO 12647/2 printing standard are the ECI and Basicolor:

1. European Colour Initiative - <http://www.eci.org/en/downloads>
2. Basicolor - <http://www.colormangement.org/en/isoprofile2009.html>

Do be careful when downloading profiles that you chose the appropriate ones. Some of the websites make this rather confusing as there are a wide range of profiles for different types of printing conditions and papers. The Basicolor website is much clearer. Listed below are some profiles that would be appropriate for Fogra 39 and Fogra 47.

#### *Basicolor Fogra 39 profiles*

ISOcoated\_v2\_bas.ICC

ISOcoated\_v2\_300\_bas.ICC

coated\_FOGRA39\_GCR\_bas.icc

#### *Basicolor Fogra 47 profile*

PSO\_Uncoated\_ISO12647\_bas.ICC